



FOCUS[®]

Adventure

www.FOCUSAdventure.com

Where every moment is a challenge!

Outdoor-Adventures
.com
VISION ACTION PASSION



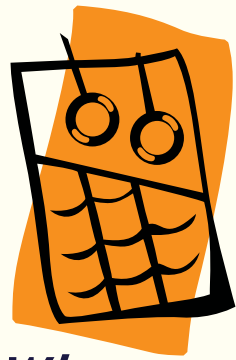
B.I.L.M.E.D.

Build . Inspection . Logistics . Maintenance . Equipment . Design



**BUSINESS
FOR GOOD**
Social Enterprise Member of raise

HumanResources
V VENDORS OF
THE YEAR
BEST TEAMBUILDING
PROVIDER 2015-2021



FOCUS®

A d v e n t u r e

www.FOCUSAdventure.com

Where every moment is a challenge!

ABOUT US

Conventional corporate training programmes, conducted usually in classroom settings, are sometimes less effective in achieving your objectives.

GAME FOR SOMETHING
DIFFERENT THAT GIVES MORE
SIGNIFICANT AND LASTING
RESULTS?

At FOCUS Adventure, all equipment and procedures comply with International Safety Standards. Training activities are diverse, ranging from thematic activities, sea sports, paintball to obstacle ropes courses.

Our professional Facilitators will recommend a programme customised to your needs, giving you the flexibility to plan and control the level and intensity of your training activities.



OUR UNIQUE SELLING PROPOSITIONS

CLBMM

Customisation

Learncentives

Business Leaders

Multi-cultural Environment

Multi-sensory Experience





B.I.L.M.E.D.

Build . Inspection . Logistics . Maintenance . Equipment . Design

BUILDING

Construction of adventure related activities, facilities and amenities.

INSPECTION

Hands on, physical inspection of elements, conducted periodically. Structural endorsement by P.E is also available.

LOGISTICS

Planning and management of resources and transportation.

MAINTENANCE

Preservation of facilities and repair work to maintain structural integrity and aesthetics.

EQUIPMENT

Supply and procurement of equipment.

DESIGN

Conceptualize ideas into drawings and blueprints.

As one of the region's leading organization in the outdoor and adventure industry,

FOCUS Adventure has our B.I.L.M.E.D team to design, build and innovate value-added structures that offers maximum returns on our clients' investment. With over 20 years of experiences operating and building outdoor and adventure facilities internationally, we have amassed a collection of ideas, solutions and expertise that would benefit our clients.

We specialises in the design and construction of standard challenge ropes courses such as High Elements a well as innovative structures such as the Team Challenge Hourglass. Our department that oversees all construction matters is called B.I.L.M.E.D. and it offers 6 different types of services

B.I.L.M.E.D serves as an one-stop service centre that covers all building and construction needs. Additionally, we could also be engaged for each of the 6 services individually.



POST CONSTRUCTION SERVICES

The relationship with our clients does not end once the project is completed. B.I.L.M.E.D continues to serve our clients to ensure the complete success of the project. We offer the following post-construction services:

WARRANTY

Our structures come with a 5 year warranty – customer protection unmatched in the industry. We are proud to be able to offer this as we have full confidence in our products based on the superior design and quality of materials used.

TRAINING

Technical know-how, risk management and facilitation; these are some of the skills we could include in our training packages.

MANAGEMENT AND CONSULTANCY

Aside from building facilities, we are also operators as well. Leverage on our expertise and experience by engaging us to manage the facilities or appoint us as specialist consultant.

STRUCTURES, FACILITIES AND EQUIPMENT

Here is sample a list of products that B.I.L.M.E.D offers:

CHALLENGE ROPES COURSE

- Low Elements
- High Elements
- Tree Top Course
- Rock Wall
- Abseiling Wall
- Zipline

CHALLENGE TOWERS

- Team Challenge Tower
- Team Challenge Pyramid
- Team Challenge Hourglass
 - exclusive to FOCUS Adventure

FULL ADVENTURE LEARNING CENTRE WITH:

- Challenge Ropes Course and Adventure Elements
- Offices
- Function Rooms
- Dormitories
- Outdoor Spaces



B . I . L . M . E . D .

Build . Inspection . Logistics . Maintenance . Equipment . Design

BEACH CLUB WITH AND WITHOUT MARINA WATER SPORTS EQUIPMENT

- Para-sailing
- Pleasure Craft
- Wakeboard
- Paddle Boards
- Towables and Inflatables
- Inflatable Water Theme Park
- JETSKI
- Sailing
- Kayaking
- Dragon Boat

RECREATION ACTIVITIES (WITH AND WITHOUT SUPPLY OF EQUIPMENT)

- Paintball Arena
- Indoor Laser Gun Arena
- Archery Range
- Dive Pool
- ATV Track
- Go Kart Track
- Artificial Caving

PARTNERSHIP MODELS

FOCUS Partnership

FOCUS Adventure offers a variety of partnership and investment models to potential investors. Here are three broadly defined models:

BUILD, OPERATE, MANAGE (BOM) MODEL

BUILD

Design of Site, Engineering Plans, Building, Maintenance and Certification of Safety Standards

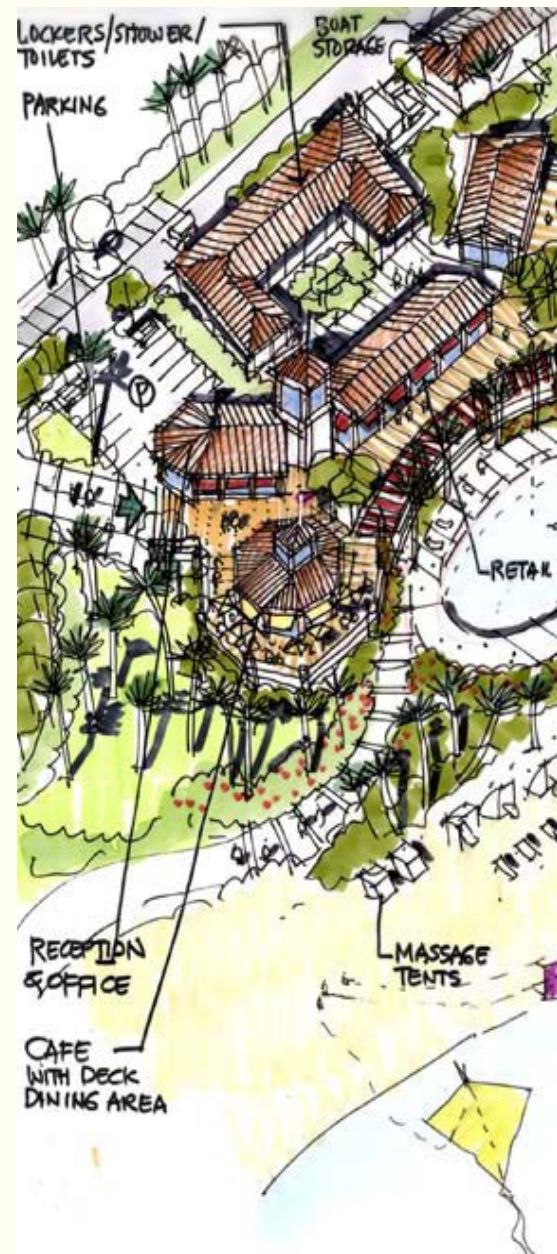
OPERATE

Training of task force, Design and Facilitate Adventure Learning Programme, Systems Transfer (BFC, CRM, OPTIONS)

MANAGE

Brand and Market the Adventure Learning Site; Rights as exclusive training provider. Interested investor will own the site via investment on land and building cost.

FOCUS Adventure will be appointed as the management agent and provides expertise in adventure learning



BUILD, OPERATE, PARTNER (BOP) MODEL

BUILD

Design of Site, Engineering Plans, Building, Maintenance and Certification of Safety Standards

OPERATE

Training of task force, Design and Facilitate Adventure Learning Programme, Systems Transfer (BFC, CRM, OPTIONS)

PARTNER

FOCUS Adventure partners with the investor to provide an additional service for the existing market. The site would be branded and marketed as FOCUS Adventure site.

FOCUS Adventure will own the facilities via investment on building cost. Investors will invest in land leased for the site and receive returns in terms through profit sharing from programmes.

BUILD, OPERATE, TRANSFER (BOT) MODEL

BUILD

Design of Site, Engineering Plans, Building, Maintenance and Certification of Safety Standards

OPERATE

Training of task force, Design and Facilitate Adventure Learning Programme, Systems Transfer (BFC, CRM, OPTIONS)

TRANSFER

Technical know-how of on the safety handling of the facilities will be transferred to the investors for its own management.

FOCUS Adventure to build the facilities and train the staffs before handing it over to the investor.



Singapore Sentosa FOCUS Adventure (Learning Facility)





**Singapore
Sembawang
CAMP CHALLENGE
(Learning Facility)**





Singapore - NACLI



**Singapore
Unity Secondary School**



**Singapore
HQ National Cadet Corps**



**Singapore
Springdale Primary
School**



**Singapore
Anglo Chinese School**



**Singapore
Fair Field Secondary
School**

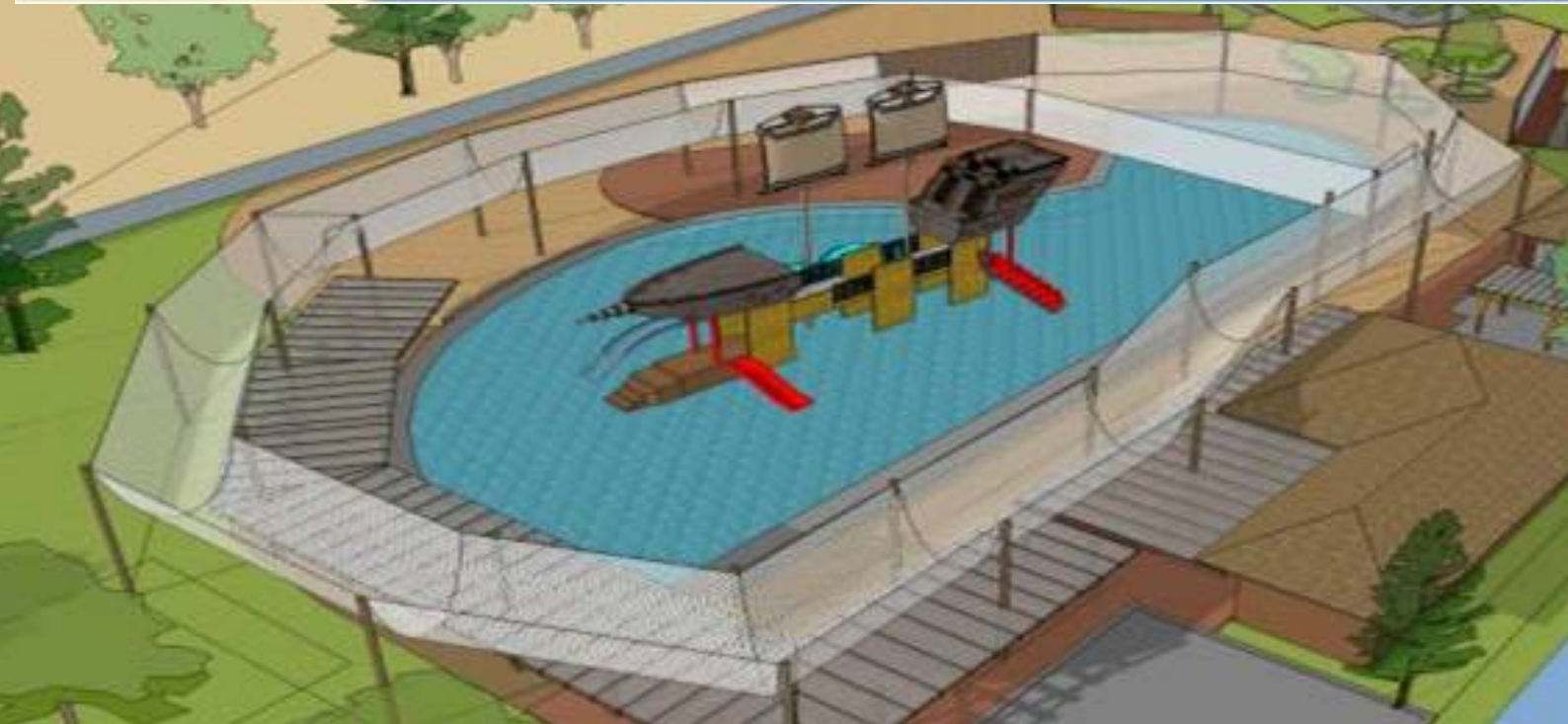


**CAMP CHALLENGE
LAKESIDE
Proposed Science
Center
Singapore**





Proposed Kampong Palawan



**Singapore
Kidzania**





Singapore



KOKOMO
Beach Club
KOKOMO-BeachClub.com





China Hainan



科科莫沙滩俱乐部

KOKOMO Beach Club

China Hainan



科科莫沙滩俱乐部

KOKOMO Beach Club







**China
Fu-xian**



ADVENTURE
HUB
CHIMELONG

HIGH ELEMENTS

ROCKWALL & ABSEIL

5G TCH

LOW ELEMEN

LASER COMBAT
AND PAINTBALL ARENA

LOW ELEMENTS

COVERED BRIEFING AREA
AND EQUIPMENT STORAGE

LOW ELEMENTS

China
Tangshan





**China
Tangshan**

**Indonesia
Bintan Lagoon Resort**

**TEAM CHALLENGE
PYRAMID (TCP)**

Low Elements





**Indonesia
Nirwana Garden**

**TEAM CHALLENGE
HOURLASS (TCH)**

Low Elements

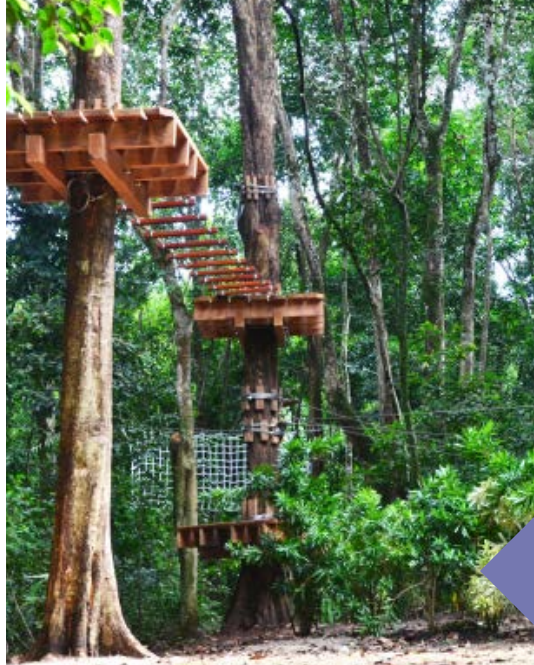




**Malaysia
Sibu Island Resort**

**TEAM CHALLENGE
HOURLASS (TCH)**

High Elements



Malaysia
ClubMed Cherating

Tree-top Course





1. RUNWAY
- 20.0 METER WIDE X 610.0 METER
(65 X 2000) FEET
2. TAXIWAY
- 10.0 METER WIDE
3. FLIGHT SCHOOL AIR TRAFFIC WITH CONTROL TOWER
30.0 X 45.0 METERS
4. FLIGHT SCHOOL WORKSHOP/ HANGAR
60.0 X 40.0M
5. PRIVATE VILLAS (FLEXIBLE SIZE) WITH
HANGARS 20.0 X 22.0 METER
(BASED FROM CESSNA 200 CARAVAN WINGSPAN 16.0 METER)
6. PRIVATE HANGARS
- 20.0 X 22.0 METER
(BASED FROM CESSNA 200 CARAVAN WINGSPAN 16.0 METER)
7. BEACH CLUB HOUSE
- 20X45 METERS
8. BOAT BERTH
9. BUGGY PATH TO BOAT BERTH
10. MARINA VILLAS
- 15.0 X20 (FLEXIBLE)

LAND AREA:
 FLIGHT PARK = 172 X 670 METERS
 = 11.52 HECTARES
 BEACH CLUB = 3.2 HECTARES



PROPOSED FLIGHT PARK AND MARINA

Malaysia Flight Park and Marina





Malaysia
Asian Yachting Academy



GO KART CIRCUIT

1.2 KILOMETER TRACK

LAND AREA: 290 x 150 meters

4.35 hectares

STOCK CAR CIRCUIT

1 KILOMETER TRACK

LAND AREA: 450x250 meters

11.25 hectares

ATV / 4WD OFF ROAD CIRCUIT

3 KILOMETER TRACK

LAND AREA: 520 meters x 440 meters

23.76 hectares



PROPOSED CONCENTRIC MOTOSPORT CIRCUIT FOR GO KART, STOCK CAR AND ATV TRACK/OFF ROAD 4X4 TRACK

ADVENTURE CAMP SITE

Land Area: 3 Hectares
Approximate Dimension: 200m x 150m



TEAM CHALLENGE HOURGLASS
Dimensions: 10m x 10m x 24m
Top Platform Capacity: 50 Pax



HIGH ELEMENTS:
Footprint dimension: 20m x 20m



LOW ELEMENTS
10 Numbers: 5 Types



FUNCTION ROOMS:
Dimension: 27.2m x 12.8m
Capacity: 150 pax / building



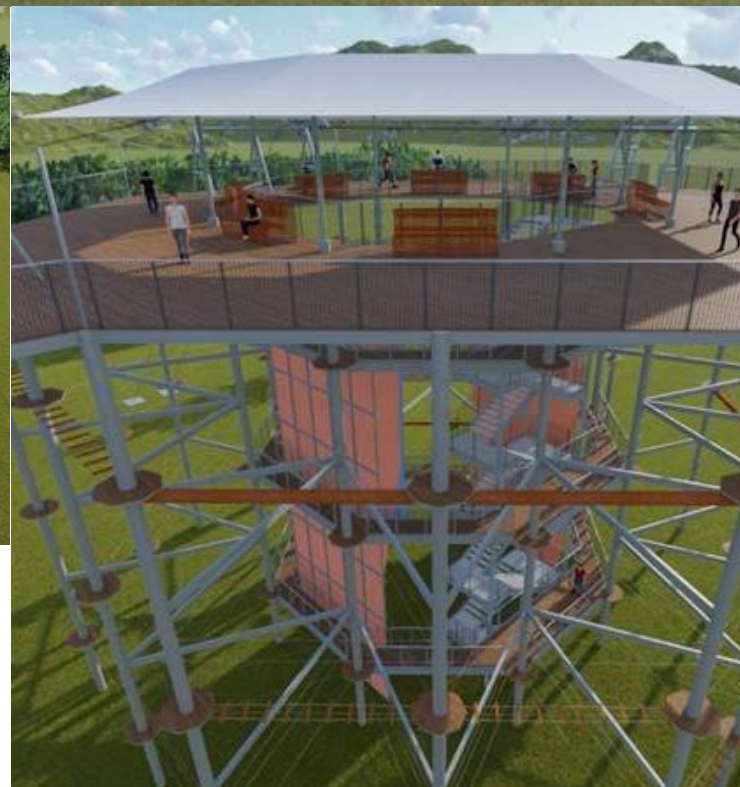
DORMITORIES:
Dimension: 27.2m x 12.8m
Capacity: 192 pax / building



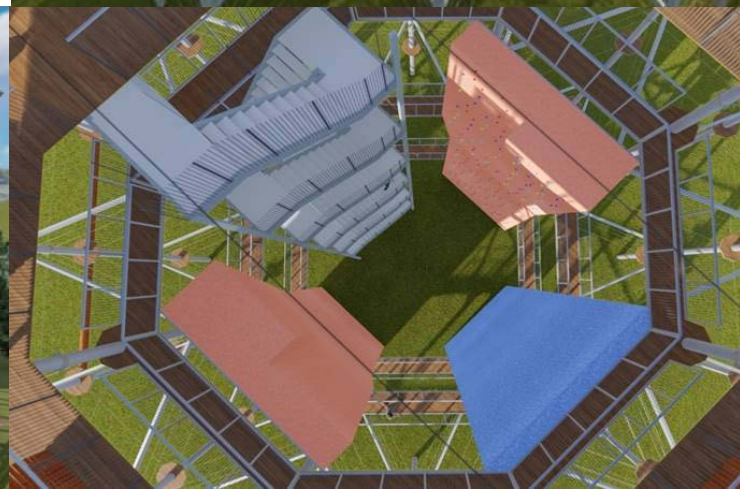
GLAMPING:
27 sets glamping area



SEA SPORTS:
Kayaking, JetSki
Warehouse/parking area: 40m x 8m



**OCTA
CHALLENGE
TOWER**



Estimated Investment

Descriptions	(USD \$)* [Without the cost of the land]
FOCUS Adventure Branding Fee Includes: <ul style="list-style-type: none"> - Trainings for Project Managers - Trainings for Facilitators - Trainings for Photo Video Instructors - Usage of Brand and Activities Logos - Design of Campsite - Website listed in FOCUSAdventure.com 	\$ 500,000.00
CAMP CHALLENGE Branding Fee Includes: <ul style="list-style-type: none"> - Trainings for Project Managers - Trainings for Instructors - Trainings for Photo Video Instructors - Usage of Brand and Activities Logos - Design of Campsite - Website listed in CAMP-CHALLENGE.com 	\$ 400,000.00
Outdoor Adventures Branding Fee Includes: <ul style="list-style-type: none"> - Trainings for Project Managers - Trainings for Instructors - Usage of Brand and Activities Logos - Design of Site - Website listed in Outdoor-Adventures.com 	\$ 300,000.00
All 3 Brands	\$ 1,200,000.00
TEAM CHALLENGE HOURGLASS - Concrete footing not included	\$ 350,000.00
High Elements	\$ 80,000.00
Low Elements	\$ 30,000.00
Function Room (3 function rooms into 1 big room) Equipped with Partitions into 3 smaller rooms, Air-con units, Projectors, LCD Screen, Sound Systems, Tables, Chairs and etc	\$ 150,000.00
Toilets 14 cubicles with showering facilities	\$ 100,000.00
Outdoor Deck	\$ 20,000.00
Onsite Office	\$ 100,000.00
SeaOPS Equipment Such as Dragon Boat(s), Safety Boat(s), Kayak(s), Sail Boat(s) and etc	\$ 50,000.00

*Rates are negotiable

*Rates are subject to changes depending on the location of set up

*Franchise Fee: 2% of the Annual Revenue

*Rates are subject to Management approval



FOCUS Adventure International Pte Ltd

Headquarter Office Address :
1 Larkhill Road #03-36 Singapore 099394
Tel: (65) 6278 6560
info@FOCUSAdventure.com

www.FOCUSAdventure.com
www.FOCUSAdventure.in
www.FOCUSAdventure.cn
www.FOCUSAdventure.com.my
www.CAMP-CHALLENGE.com
www.Outdoor-Adventures.com
www.KOKOMO-BeachClub.com
www.AsianYachtingAcademy.com
www.P1PowerBoats.com
www.JETSKISafari.com

